



**Cable ID: DS-1LN6-UU**

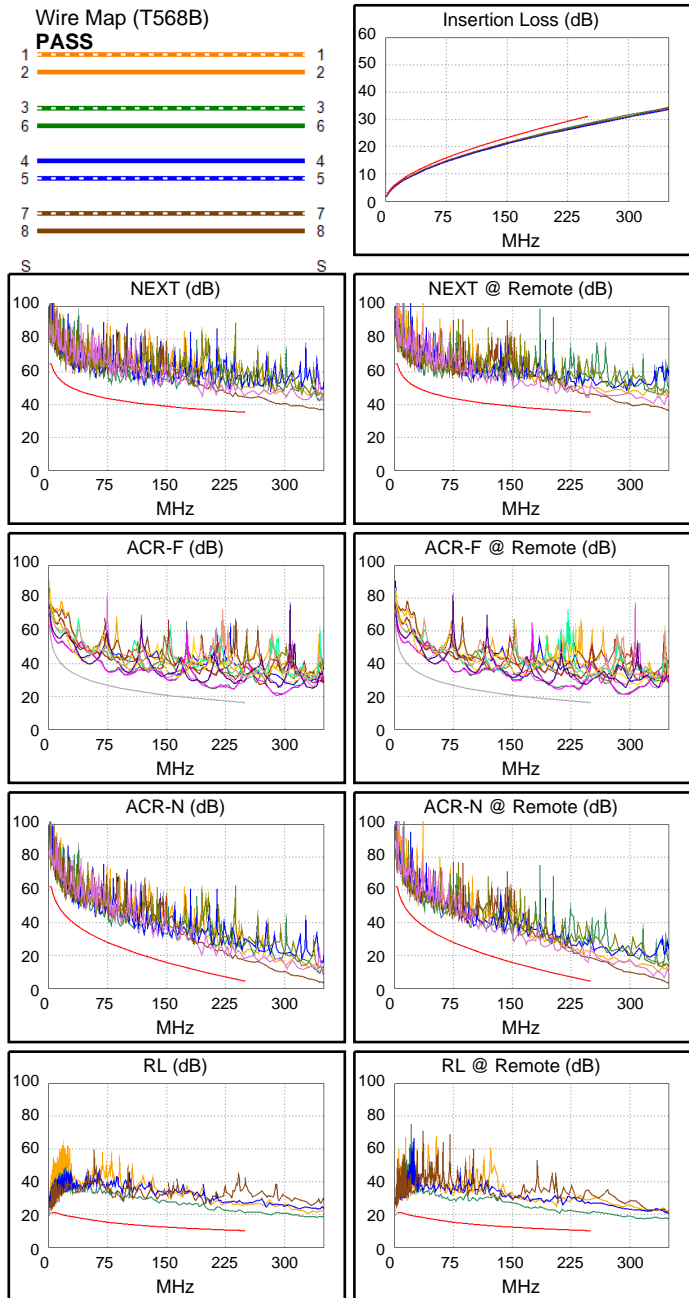
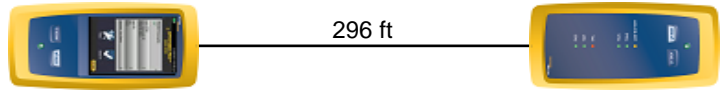
Date / Time: 09/14/2018 08:36:40 AM  
**Headroom 7.3 dB (NEXT 45-78)**  
 Test Limit: TIA Cat 6 Perm. Link  
 Cable Type: Cat 6 U/UTP  
 NVP: 69.0%

Operator: PGK  
 Software Version: V5.2 Build 1  
 Limits Version: V6.1  
 Calibration Date:  
 Main (Module): 10/30/2017  
 Remote (Module): 10/30/2017

**Test Summary: PASS**

Model: DSX-5000  
 Main S/N: 2552832  
 Remote S/N: 2553068  
 Main Adapter: DSX-PLA004  
 Remote Adapter: DSX-PLA004

Length (ft), Limit 295	[Pair 78]	296
Prop. Delay (ns), Limit 498	[Pair 36]	456
Delay Skew (ns), Limit 44	[Pair 36]	20
Resistance (ohms)	[Pair 78]	17.00
Insertion Loss Margin (dB)	[Pair 36]	2.7
Frequency (MHz)	[Pair 36]	250.0
Limit (dB)	[Pair 36]	31.1



**Worst Case Margin Worst Case Value**

<b>PASS</b>	MAIN	SR	MAIN	SR
Worst Pair	45-78	45-78	36-45	45-78
<b>NEXT (dB)</b>	8.0	7.3	8.5	7.3
Freq. (MHz)	195.0	246.0	242.5	246.0
Limit (dB)	37.1	35.5	35.6	35.5
Worst Pair	45	45	45	45
<b>PS NEXT (dB)</b>	8.8	8.3	8.8	8.3
Freq. (MHz)	249.5	246.0	249.5	246.0
Limit (dB)	32.7	32.8	32.7	32.8

<b>PASS</b>	MAIN	SR	MAIN	SR
Worst Pair	12-45	45-12	12-45	45-12
<b>ACR-F (dB)</b>	6.8	6.5	7.8	7.4
Freq. (MHz)	210.0	210.0	235.5	235.5
Limit (dB)	17.7	17.7	16.7	16.7
Worst Pair	45	45	45	45
<b>PS ACR-F (dB)</b>	9.0	9.1	10.0	10.0
Freq. (MHz)	1.0	1.4	236.0	233.0
Limit (dB)	61.2	58.4	13.7	13.8

<b>N/A</b>	MAIN	SR	MAIN	SR
Worst Pair	45-78	12-45	45-78	45-78
<b>ACR-N (dB)</b>	10.4	9.8	12.4	10.3
Freq. (MHz)	195.0	37.8	249.0	246.0
Limit (dB)	10.1	37.7	4.3	4.6
Worst Pair	45	45	45	45
<b>PS ACR-N (dB)</b>	12.1	11.3	12.1	11.6
Freq. (MHz)	249.5	37.5	249.5	246.0
Limit (dB)	1.7	35.3	1.7	2.0

<b>PASS</b>	MAIN	SR	MAIN	SR
Worst Pair	78	78	36	36
<b>RL (dB)</b>	4.6	6.6	10.9	10.4
Freq. (MHz)	3.6	3.5	249.5	249.5
Limit (dB)	21.0	21.0	10.0	10.0

Compliant Network Standards:  
 10BASE-T      100BASE-TX      100BASE-T4  
 1000BASE-T      2.5GBASE-T      5GBASE-T  
 ATM-25      ATM-51      ATM-155  
 100VG-AnyLan      TR-4      TR-16 Active  
 TR-16 Passive